

## LSHB Polyclonal Antibody

### Description

|                                |   |
|--------------------------------|---|
| <b>Product type</b>            | Primary Antibody  |
| <b>Code</b>                    | BT-AP10983  |
| <b>Host</b>                    | Rabbit  |
| <b>Isotype</b>                 | IgG   |
| <b>Size</b>                    | 20ul, 50ul, 100ul   |
| <b>Immunogen</b>               | Synthesized peptide derived from part region of human protein                                   |
| <b>Mol wt</b>                  | N/A   |
| <b>Species reactivity</b>      | Human, Mouse, Rat   |
| <b>Clonality</b>               | Polyclonal  |
| <b>Recommended application</b> | WB, ELISA   |
| <b>Concentration</b>           | 1 mg/ml   |
| <b>Full name</b>               | Lutropin subunit beta   |
| <b>Synonyms</b>                | Lutropin subunit beta ;Lutropin beta chain;Luteinizing hormone subunit beta;LH-B;LSH-B;LSH-beta |

**This product is for research use only, not for use in human, therapeutic or diagnostic procedure.**

### Background

This gene is a member of the glycoprotein hormone beta chain family and encodes the beta subunit of luteinizing hormone (LH). Glycoprotein hormones are heterodimers consisting of a common alpha subunit and an unique beta subunit which confers biological specificity. LH is expressed in the pituitary gland and promotes spermatogenesis and ovulation by stimulating the testes and ovaries to synthesize steroids. The genes for the beta chains of chorionic gonadotropin and for luteinizing hormone are contiguous on chromosome 19q13.3. Mutations in this gene are associated with hypogonadism which is characterized by infertility and pseudohermaphroditism.

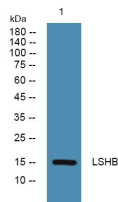
### Recommended Dilution

WB: 1: 500 - 1: 2000

ELISA: 1: 5000 - 1: 20000

Not yet tested in other applications.

### Images



Western blot analysis of lysates from K562 cells, primary antibody was diluted at 1:1000, 4°C overnight

### Storage

-20°C for 1 year