

LSM2 Polyclonal Antibody

Description

Product type	Primary Antibody
Code	BT-AP10987
Host	Rabbit
Isotype	IgG
Size	20ul, 50ul, 100ul
Immunogen	Synthesized peptide derived from human protein . at AA range: 40-120
Mol wt	N/A
Species reactivity	Human, Mouse
Clonality	Polyclonal
Recommended application	WB, ELISA
Concentration	1 mg/ml
Full name	U6 snRNA-associated Sm-like protein LSm2
Synonyms	U6 snRNA-associated Sm-like protein LSm2 ;Protein G7b;Small nuclear ribonuclear protein D homolog;snRNP core Sm-like protein Sm-x5

This product is for research use only, not for use in human, therapeutic or diagnostic procedure.

Background

This gene encodes a member of the LSm family of RNA-binding proteins. LSm proteins form stable heteromers that bind specifically to the 3'-terminal oligo(U) tract of U6 snRNA and may play a role in pre-mRNA splicing by mediating U4/U6 snRNP formation. Pseudogenes of this gene are located on the short arm of chromosomes 6 and 19.

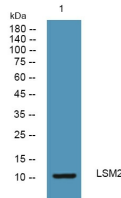
Recommended Dilution

WB: 1: 500 - 1: 2000

ELISA: 1: 5000 - 1: 20000

Not yet tested in other applications.

Images



Western blot analysis of lysates from Jarkat cells, primary antibody was diluted at 1:1000, 4°C overnight

Storage

-20°C for 1 year