

## LT4R1 Polyclonal Antibody

### Description

<b>Product type</b>	Primary Antibody
<b>Code</b>	BT-AP10993
<b>Host</b>	Rabbit
<b>Isotype</b>	IgG
<b>Size</b>	20ul, 50ul, 100ul
<b>Immunogen</b>	Synthesized peptide derived from part region of human protein
<b>Mol wt</b>	N/A
<b>Species reactivity</b>	Human, Mouse, Rat
<b>Clonality</b>	Polyclonal
<b>Recommended application</b>	WB, ELISA
<b>Concentration</b>	1 mg/ml
<b>Full name</b>	Leukotriene B4 receptor 1
<b>Synonyms</b>	Leukotriene B4 receptor 1 ;LTB4-R 1;LTB4-R1;Chemoattractant receptor-like 1;G-protein coupled receptor 16;P2Y purinoceptor 7;P2Y7

This product is for research use only, not for use in human, therapeutic or diagnostic procedure.

### Background

UTP and ADP. The activity of this receptor is mediated by G proteins which activate a phosphatidylinositol-calcium second messenger system. May be the cardiac P2Y receptor involved in the regulation of cardiac muscle contraction through modulation of L-type calcium currents. Is a receptor for leukotriene B4, a potent chemoattractant involved in inflammation and immune response.,PTM:Phosphorylated by GRK6 upon leukotriene B4 binding; which promotes desensitization.,Belongs to the G-protein coupled receptor 1 family.,tissue specificity:Expressed at highest levels in heart, skeletal muscle and at lower levels in brain and liver. High level of expression in lymphoid tissues.,

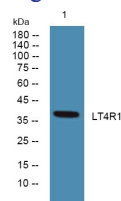
### Recommended Dilution

WB: 1: 500 - 1: 2000

ELISA: 1: 5000 - 1: 20000

Not yet tested in other applications.

### Images



Western blot analysis of lysates from SH-SY5Y cells, primary antibody was diluted at 1:1000, 4°C overnight

### Storage

-20°C for 1 year