

LT4R2 Polyclonal Antibody

Description

| | |
|-------------------------|---------------------------------------------------------------------------------------------------------------------------------|
| Product type | Primary Antibody |
| Code | BT-AP10994 |
| Host | Rabbit |
| Isotype | IgG |
| Size | 20ul, 50ul, 100ul |
| Immunogen | Synthesized peptide derived from human protein . at AA range: 290-370 |
| Mol wt | N/A |
| Species reactivity | Human, Rat, Mouse |
| Clonality | Polyclonal |
| Recommended application | WB, ELISA |
| Concentration | 1 mg/ml |
| Full name | Leukotriene B4 receptor 2 |
| Synonyms | Leukotriene B4 receptor 2 ;LTB4-R 2;LTB4-R2;LTB4 receptor JULF2;Leukotriene B4 receptor BLT2;Seven transmembrane receptor BLTR2 |

This product is for research use only, not for use in human, therapeutic or diagnostic procedure.

Background

It is uncertain whether Met-1 or Met-32 is the initiator.,Low-affinity receptor for leukotrienes including leukotriene B4. Mediates chemotaxis of granulocytes and macrophages. The response is mediated via G-proteins that activate a phosphatidylinositol-calcium second messenger system. The rank order of affinities for the leukotrienes is LTB4 > 12-epi-LTB4 > LTB5 > LTB3.,Belongs to the G-protein coupled receptor 1 family.,tissue specificity:Widely expressed.,

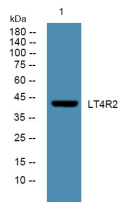
Recommended Dilution

WB: 1: 500 - 1: 2000

ELISA: 1: 5000 - 1: 20000

Not yet tested in other applications.

Images



Western blot analysis of lysates from K562 cells, primary antibody was diluted at 1:1000, 4°C overnight

Storage

-20°C for 1 year