

## LY86 Polyclonal Antibody

### Description

Product type	Primary Antibody
Code	BT-AP11008
Host	Rabbit
Isotype	IgG
Size	20ul, 50ul, 100ul
Immunogen	Synthesized peptide derived from human protein . at AA range: 80-160
Mol wt	N/A
Species reactivity	Human, Mouse
Clonality	Polyclonal
Recommended application	WB, ELISA
Concentration	1 mg/ml
Full name	Lymphocyte antigen 86
Synonyms	Lymphocyte antigen 86 ;Ly-86;Protein MD-1

This product is for research use only, not for use in human, therapeutic or diagnostic procedure.

### Background

May cooperate with CD180 and TLR4 to mediate the innate immune response to bacterial lipopolysaccharide (LPS) and cytokine production. Important for efficient CD180 cell surface expression.,induction:In monocytes, down-regulated by the cell-wall fraction of Mycobacterium bovis (BCG-CWS).,subcellular location:Associated with CD180 at the cell surface.,subunit:Binds CD180.,tissue specificity:Highly expressed in B-cells, monocytes and tonsil.,

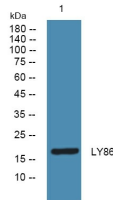
### Recommended Dilution

WB: 1: 500 - 1: 2000

ELISA: 1: 5000 - 1: 20000

Not yet tested in other applications.

### Images



Western blot analysis of lysates from U2OS cells, primary antibody was diluted at 1:1000, 4°C overnight

### Storage

-20°C for 1 year