

LYPE2 Polyclonal Antibody

Description

Product type	Primary Antibody
Code	BT-AP11017
Host	Rabbit
Isotype	IgG
Size	20ul, 50ul, 100ul
Immunogen	Synthesized peptide derived from human protein . at AA range: 30-110
Mol wt	N/A
Species reactivity	Human, Mouse, Rat
Clonality	Polyclonal
Recommended application	WB, ELISA
Concentration	1 mg/ml
Full name	Acyl-protein thioesterase 2
Synonyms	Acyl-protein thioesterase 2 ; APT-2; EC 3.1.2.-; Lysophospholipase II; LPL-II; LysoPLA II

This product is for research use only, not for use in human, therapeutic or diagnostic procedure.

Background

Lysophospholipases are enzymes that act on biological membranes to regulate the multifunctional lysophospholipids. There are alternatively spliced transcript variants described for this gene but the full length nature is not known yet.

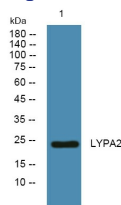
Recommended Dilution

WB: 1: 500 - 1: 2000

ELISA: 1: 5000 - 1: 20000

Not yet tested in other applications.

Images



Western blot analysis of lysates from PC12 cells, primary antibody was diluted at 1:1000, 4°C overnight

Storage

-20°C for 1 year