

## LYVE1 Polyclonal Antibody

### Description

Product type	Primary Antibody
Code	BT-AP11019
Host	Rabbit
Isotype	IgG
Size	20ul, 50ul, 100ul
Immunogen	Synthesized peptide derived from part region of human protein
Mol wt	N/A
Species reactivity	Human, Mouse
Clonality	Polyclonal
Recommended application	WB, ELISA
Concentration	1 mg/ml
Full name	Lymphatic vessel endothelial hyaluronic acid receptor 1
Synonyms	Lymphatic vessel endothelial hyaluronic acid receptor 1 ;LYVE-1;Cell surface retention sequence-binding protein 1;CRSBP-1;Extracellular link domain-containing protein 1;Hyaluronic acid recepto

This product is for research use only, not for use in human, therapeutic or diagnostic procedure.

### Background

This gene encodes a type I integral membrane glycoprotein. The encoded protein acts as a receptor and binds to both soluble and immobilized hyaluronan. This protein may function in lymphatic hyaluronan transport and have a role in tumor metastasis.

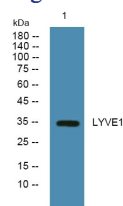
### Recommended Dilution

WB: 1: 500 - 1: 2000

ELISA: 1: 5000 - 1: 20000

Not yet tested in other applications.

### Images



Western blot analysis of lysates from HCT116 cells, primary antibody was diluted at 1:1000, 4°C overnight

### Storage

-20°C for 1 year