

LCE2B Rabbit Polyclonal Antibody

Description

Product type	Primary Antibody
Code	BT-AP11020
Host	Rabbit
Isotype	IgG
Size	100ul, 50ul, 20ul
Immunogen	Synthesized peptide derived from human LCE2B
Mol wt	12100
Species reactivity	Human, Rat, Mouse
Clonality	Polyclonal
Recommended application	WB
Concentration	1 mg/ml
Full name	LCE2B
Synonyms	LCE2B

This product is for research use only, not for use in human, therapeutic or diagnostic procedure.

Background

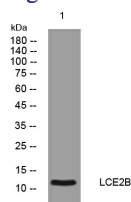
This gene is one of the at least 20 genes expressed during epidermal differentiation and located on chromosomal band 1q21. This gene is involved in epidermal differentiation| and it is expressed at high levels in normal and psoriatic skin| but not in cultured keratinocytes or in any other tested cell types or tissues.

Recommended Dilution

WB: 1: 500 - 1: 2000

Not yet tested in other applications.

Images



Western blot analysis of lysates from MCF-7 cells, primary antibody was diluted at 1:1000, 4°C overnight

Storage

-20°C for 1 year

501 Changsheng S Rd, Nanhu Dist, Jiaxing, Zhejiang, China

Tel: 86 21 31007137 | E-mail: save@bt-laboratory.com | www.bt-laboratory.com