

M1IP1 Polyclonal Antibody

Description

Product type	Primary Antibody
Code	BT-AP11025
Host	Rabbit
Isotype	IgG
Size	20ul, 50ul, 100ul
Immunogen	Synthesized peptide derived from human protein . at AA range: 90-170
Mol wt	N/A
Species reactivity	Human, Mouse, Rat
Clonality	Polyclonal
Recommended application	WB, ELISA
Concentration	1 mg/ml
Full name	Mid1-interacting protein 1
Synonyms	Mid1-interacting protein 1 ;Gastrulation-specific G12-like protein;Mid1-interacting G12-like protein;Protein STRAIT11499;Spot 14-related protein;S14R;Spot 14-R

This product is for research use only, not for use in human, therapeutic or diagnostic procedure.

Background

It is uncertain whether Met-1 or Met-2 is the initiator.,Involved in stabilization of microtubules.,Belongs to the SPOT14 family.,subcellular location:Associated with microtubules.,

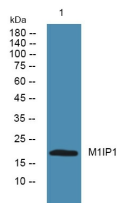
Recommended Dilution

WB: 1: 500 - 1: 2000

ELISA: 1: 5000 - 1: 20000

Not yet tested in other applications.

Images



Western blot analysis of lysates from K562 cells, primary antibody was diluted at 1:1000, 4°C overnight

Storage

-20°C for 1 year