

LCTL Rabbit Polyclonal Antibody

Description

Product type	Primary Antibody
Code	BT-AP11031
Host	Rabbit
Isotype	IgG
Size	100ul, 50ul, 20ul
Immunogen	Synthesized peptide derived from human LCTL
Mol wt	N/A
Species reactivity	Human, Mouse
Clonality	Polyclonal
Recommended application	WB
Concentration	1 mg/ml
Full name	LCTL
Synonyms	LCTL; Lactase-like protein; Klotho/lactase-phlorizin hydrolase-related protein

This product is for research use only, not for use in human, therapeutic or diagnostic procedure.

Background

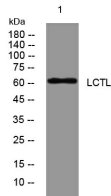
This gene encodes a member of family 1 glycosidases. Glycosidases are enzymes that hydrolyze glycosidic bonds and are classified into families based on primary amino acid sequence. Most members of family 1 have two conserved glutamic acid residues which are required for enzymatic activity. The mouse ortholog of this protein has been characterized and has a domain structure of an N-terminal signal peptide| glycosidase domain| transmembrane domain| and a short cytoplasmic tail. It lacks one of the conserved glutamic acid residues important for catalysis and its function remains to be determined (PMID: 12084582). Alternative splicing results in multiple transcript variants.

Recommended Dilution

WB: 1: 500 - 1: 2000

Not yet tested in other applications.

Images



Western blot analysis of lysates from MCF-7 cells, primary antibody was diluted at 1:1000, 4°C overnight

Storage

-20°C for 1 year