

## LIGO4 Rabbit Polyclonal Antibody

### Description

Product type	Primary Antibody
Code	BT-AP11042
Host	Rabbit
Isotype	IgG
Size	100ul, 50ul, 20ul
Immunogen	Synthesized peptide derived from human LIGO4
Mol wt	65230
Species reactivity	Human, Mouse
Clonality	Polyclonal
Recommended application	WB
Concentration	1 mg/ml
Full name	LIGO4
Synonyms	LIGO4

This product is for research use only, not for use in human, therapeutic or diagnostic procedure.

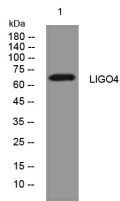
### Background

#### Recommended Dilution

WB: 1: 500 - 1: 2000

Not yet tested in other applications.

### Images



### Storage

-20°C for 1 year

501 Changsheng S Rd, Nanhu Dist, Jiaxing, Zhejiang, China

Tel: 86 21 31007137 | E-mail: [save@bt-laboratory.com](mailto:save@bt-laboratory.com) | [www.bt-laboratory.com](http://www.bt-laboratory.com)