

## LIN28A(Phospho-Ser200) Rabbit Polyclonal Antibody

### Description

|                                |  |
|--------------------------------|--|
| <b>Product type</b>            | Primary Antibody   |
| <b>Code</b>                    | BT-AP11043   |
| <b>Host</b>                    | Rabbit   |
| <b>Isotype</b>                 | IgG  |
| <b>Size</b>                    | 100ul, 50ul, 20ul  |
| <b>Immunogen</b>               | Synthesized phospho peptide around human LIN28A (Ser200)   |
| <b>Mol wt</b>                  | N/A  |
| <b>Species reactivity</b>      | Human, Rat, Mouse  |
| <b>Clonality</b>               | Polyclonal   |
| <b>Recommended application</b> | WB   |
| <b>Concentration</b>           | 1 mg/ml  |
| <b>Full name</b>               | LIN28A   |
| <b>Synonyms</b>                | LIN28A ;Ser200 ; Protein lin-28 homolog A; Lin-28A; Zinc finger CCHC domain-containing protein 1 |

This product is for research use only, not for use in human, therapeutic or diagnostic procedure.

### Background

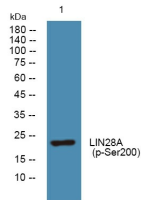
This gene encodes a LIN-28 family RNA-binding protein that acts as a posttranscriptional regulator of genes involved in developmental timing and self-renewal in embryonic stem cells. The encoded protein functions through direct interaction with target mRNAs and by disrupting the maturation of certain miRNAs involved in embryonic development. This protein prevents the terminal processing of the LET7 family of microRNAs which are major regulators of cellular growth and differentiation. Aberrant expression of this gene is associated with cancer progression in multiple tissues.

### Recommended Dilution

WB: 1: 1000 - 1: 2000

Not yet tested in other applications.

### Images



Western blot analysis of lysates from K562 cells, primary antibody was diluted at 1:1000, 4°C overnight

### Storage

-20°C for 1 year