

## MAGA6 Polyclonal Antibody

### Description

<b>Product type</b>	Primary Antibody
<b>Code</b>	BT-AP11056
<b>Host</b>	Rabbit
<b>Isotype</b>	IgG
<b>Size</b>	20ul, 50ul, 100ul
<b>Immunogen</b>	Synthesized peptide derived from human protein . at AA range: 10-90
<b>Mol wt</b>	N/A
<b>Species reactivity</b>	Human, Rat, Mouse
<b>Clonality</b>	Polyclonal
<b>Recommended application</b>	WB, ELISA
<b>Concentration</b>	1 mg/ml
<b>Full name</b>	Melanoma-associated antigen 6
<b>Synonyms</b>	Melanoma-associated antigen 6 ;Cancer/testis antigen 1.6;CT1.6;MAGE-6 antigen;MAGE3B antigen

**This product is for research use only, not for use in human, therapeutic or diagnostic procedure.**

### Background

This gene is a member of the MAGEA gene family. The members of this family encode proteins with 50 to 80% sequence identity to each other. The promoters and first exons of the MAGEA genes show considerable variability, suggesting that the existence of this gene family enables the same function to be expressed under different transcriptional controls. The MAGEA genes are clustered at chromosomal location Xq28. They have been implicated in some hereditary disorders, such as dyskeratosis congenita. Alternative splicing results in multiple transcript variants.

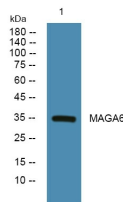
### Recommended Dilution

WB: 1: 500 - 1: 2000

ELISA: 1: 5000 - 1: 20000

Not yet tested in other applications.

### Images



Western blot analysis of lysates from Jarkat cells, primary antibody was diluted at 1:1000, 4°C overnight

### Storage

-20°C for 1 year