

MAGF1 Polyclonal Antibody

Description

Product type	Primary Antibody
Code	BT-AP11079
Host	Rabbit
Isotype	IgG
Size	20ul, 50ul, 100ul
Immunogen	Synthesized peptide derived from human protein . at AA range: 30-110
Mol wt	N/A
Species reactivity	Human, Rat, Mouse
Clonality	Polyclonal
Recommended application	WB, ELISA
Concentration	1 mg/ml
Full name	Melanoma-associated antigen F1
Synonyms	Melanoma-associated antigen F1 ;MAGE-F1 antigen

This product is for research use only, not for use in human, therapeutic or diagnostic procedure.

Background

This intronless gene encodes a member of the MAGE superfamily. It is ubiquitously expressed in normal tissues and in tumor cells. This gene includes a microsatellite repeat in the coding region.

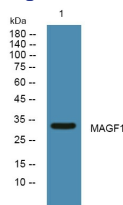
Recommended Dilution

WB: 1: 500 - 1: 2000

ELISA: 1: 5000 - 1: 20000

Not yet tested in other applications.

Images



Western blot analysis of lysates from Jarkat cells, primary antibody was diluted at 1:1000, 4°C overnight

Storage

-20°C for 1 year