

MAK(Phospho Tyr159) Polyclonal Antibody

Description

Product type	Primary Antibody
Code	BT-AP11083
Host	Rabbit
Isotype	IgG
Size	20ul, 50ul, 100ul
Immunogen	The antiserum was produced against synthesized peptide derived from human MAK around the phosphorylation site of Tyr159. AA range:126-175
Mol wt	70581
Species reactivity	Human, Mouse, Rat
Clonality	Polyclonal
Recommended application	WB, ELISA
Concentration	1 mg/ml
Full name	Serine/threonine-protein kinase MAK
Synonyms	Serine/threonine-protein kinase MAK; MAK; Serine/threonine-protein kinase MAK; Male germ cell-associated kinase

This product is for research use only, not for use in human, therapeutic or diagnostic procedure.

Background

The product of this gene is a serine/threonine protein kinase related to kinases involved in cell cycle regulation. Studies of the mouse and rat homologs have localized the kinase to the chromosomes during meiosis in spermatogenesis, specifically to the synaptonemal complex that exists while homologous chromosomes are paired. Mutations in this gene have been associated with ciliary defects resulting in retinitis pigmentosa 62. Alternative splicing results in multiple transcript variants.

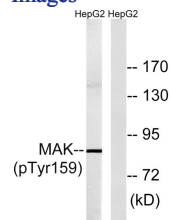
Recommended Dilution

WB: 1: 500 - 1: 2000

ELISA: 1: 40000

Not yet tested in other applications.

Images



Western blot analysis of lysates from HepG2 cells treated with PMA 125ng/ml 30', using MAK (Phospho-Tyr159) Antibody. The lane on the right is blocked with the phospho peptide.

Storage

-20°C for 1 year