

MAP LC3 beta Polyclonal Antibody

Description

Product type	Primary Antibody
Code	BT-AP11097
Host	Rabbit
Isotype	IgG
Size	20ul, 50ul, 100ul
Immunogen	Synthetic peptide from human protein at AA range: 1-50
Mol wt	N/A
Species reactivity	Human, Mouse, Rat
Clonality	Polyclonal
Recommended application	WB, ELISA
Concentration	1 mg/ml
Full name	Microtubule-associated proteins 1A/1B light chain 3B
Synonyms	Microtubule-associated proteins 1A/1B light chain 3B ;Autophagy-related protein LC3 B;Autophagy-related ubiquitin-like modifier LC3 B;MAP1 light chain 3-like protein 2;MAP1A/MAP1B light chain 3 ; Microtubule-associated proteins 1A/1B light chain 3B; Autophagy-related protein LC3 B; Autophagy-related ubiquitin-like modifier LC3 B; MAP1 light chain 3-like protein 2; MAP1A/MAP1B light chain 3 B; MAP1A/MAP1B LC3 B; Microtubule-associated protein 1 light chain 3 beta

This product is for research use only, not for use in human, therapeutic or diagnostic procedure.

Background

The product of this gene is a subunit of neuronal microtubule-associated MAP1A and MAP1B proteins, which are involved in microtubule assembly and important for neurogenesis. Studies on the rat homolog implicate a role for this gene in autophagy, a process that involves the bulk degradation of cytoplasmic component.

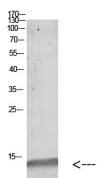
Recommended Dilution

WB: 1: 500 - 1: 2000

ELISA: 1: 10000 - 1: 20000

Not yet tested in other applications.

Images



Western blot analysis of mouse-kidney mouse-kidney mouse-lung mouse-heart 293T 293T lysate, antibody was diluted at 1000. Secondary antibody was diluted at 1:20000

Storage

-20°C for 1 year