

LOXL3 Rabbit Polyclonal Antibody

Description

Product type	Primary Antibody
Code	BT-AP11098
Host	Rabbit
Isotype	IgG
Size	100ul, 50ul, 20ul
Immunogen	Synthesized peptide derived from human LOXL3
Mol wt	82830
Species reactivity	Human, Mouse
Clonality	Polyclonal
Recommended application	WB
Concentration	1 mg/ml
Full name	LOXL3
Synonyms	LOXL3

This product is for research use only, not for use in human, therapeutic or diagnostic procedure.

Background

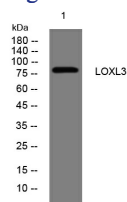
This gene encodes a lysyl oxidase which likely functions as an amine oxidase and plays a role in the formation of crosslinks in collagens and elastin. Deletion of the related gene in mouse causes neonatal mortality with cleft palate| spine deformity| and defects in collagen organization. A mutation in this gene was found in a family with Stickler syndrome.

Recommended Dilution

WB: 1: 500 - 1: 2000

Not yet tested in other applications.

Images



Western blot analysis of lysates from U2OS cells, primary antibody was diluted at 1:1000, 4°C overnight

Storage

-20°C for 1 year

501 Changsheng S Rd, Nanhu Dist, Jiaxing, Zhejiang, China

Tel: 86 21 31007137 | E-mail: save@bt-laboratory.com | www.bt-laboratory.com