

## MARH8 Polyclonal Antibody

### Description

<b>Product type</b>	Primary Antibody
<b>Code</b>	BT-AP11124
<b>Host</b>	Rabbit
<b>Isotype</b>	IgG
<b>Size</b>	20ul, 50ul, 100ul
<b>Immunogen</b>	Synthesized peptide derived from part region of human protein
<b>Mol wt</b>	N/A
<b>Species reactivity</b>	Human, Rat, Mouse
<b>Clonality</b>	Polyclonal
<b>Recommended application</b>	WB, ELISA
<b>Concentration</b>	1 mg/ml
<b>Full name</b>	E3 ubiquitin-protein ligase MARCH8
<b>Synonyms</b>	E3 ubiquitin-protein ligase MARCH8 ;EC 6.3.2.-;Cellular modulator of immune recognition;c-MIR;Membrane-associated RING finger protein 8;Membrane-associated RING-CH protein VIII;MARCH-VIII;

This product is for research use only, not for use in human, therapeutic or diagnostic procedure.

### Background

MARCH8 is a member of the MARCH family of membrane-bound E3 ubiquitin ligases (EC 6.3.2.19). MARCH enzymes add ubiquitin (see MIM 191339) to target lysines in substrate proteins, thereby signaling their vesicular transport between membrane compartments. MARCH8 induces the internalization of several membrane glycoproteins (Goto et al., 2003)

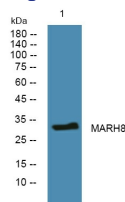
### Recommended Dilution

WB: 1: 500 - 1: 2000

ELISA: 1: 5000 - 1: 20000

Not yet tested in other applications.

### Images



Western blot analysis of lysates from SW480 cells, primary antibody was diluted at 1:1000, 4°C overnight

### Storage

-20°C for 1 year