

MARH9 Polyclonal Antibody

Description

Product type	Primary Antibody
Code	BT-AP11125
Host	Rabbit
Isotype	IgG
Size	20ul, 50ul, 100ul
Immunogen	Synthesized peptide derived from part region of human protein
Mol wt	N/A
Species reactivity	Human, Mouse
Clonality	Polyclonal
Recommended application	WB, ELISA
Concentration	1 mg/ml
Full name	E3 ubiquitin-protein ligase MARCH9
Synonyms	E3 ubiquitin-protein ligase MARCH9 ;EC 6.3.2.-;Membrane-associated RING finger protein 9;Membrane-associated RING-CH protein IX;MARCH-IX;RING finger protein 179

This product is for research use only, not for use in human, therapeutic or diagnostic procedure.

Background

MARCH9 is a member of the MARCH family of membrane-bound E3 ubiquitin ligases (EC 6.3.2.19). MARCH enzymes add ubiquitin (see MIM 191339) to target lysines in substrate proteins, thereby signaling their vesicular transport between membrane compartments. MARCH9 induces internalization of several membrane glycoproteins and directs them to the endosomal compartment (Bartee et al., 2004)

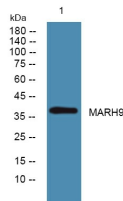
Recommended Dilution

WB: 1: 500 - 1: 2000

ELISA: 1: 5000 - 1: 20000

Not yet tested in other applications.

Images



Western blot analysis of lysates from K562 cells, primary antibody was diluted at 1:1000, 4°C overnight

Storage

-20°C for 1 year