

LRCH2 Rabbit Polyclonal Antibody

Description

| | |
|--------------------------------|--|
| Product type | Primary Antibody |
| Code | BT-AP11132 |
| Host | Rabbit |
| Isotype | IgG |
| Size | 100ul, 50ul, 20ul |
| Immunogen | Synthesized peptide derived from human LRCH2 |
| Mol wt | N/A |
| Species reactivity | Human, Mouse |
| Clonality | Polyclonal |
| Recommended application | WB |
| Concentration | 1 mg/ml |
| Full name | LRCH2 |
| Synonyms | LRCH2; Leucine-rich repeat and calponin homology domain-containing protein 2 |

This product is for research use only, not for use in human, therapeutic or diagnostic procedure.

Background

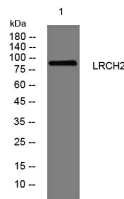
This gene encodes a member of the leucine-rich repeat and calponin homology domain-containing protein family. These family members contain multiple N-terminal leucine-rich repeats| in addition to a C-terminal calponin homology domain| a type of domain that mediates interactions with actin filaments. These proteins are conserved across animal species| and studies of a similar Drosophila protein indicate a function as a cytoskeletal scaffolding protein. Alternative splicing of this gene results in multiple transcript variants.

Recommended Dilution

WB: 1: 500 - 1: 2000

Not yet tested in other applications.

Images



Western blot analysis of lysates from HeLa cells, primary antibody was diluted at 1:1000, 4°C overnight

Storage

-20°C for 1 year