

Mas1 Polyclonal Antibody

Description

Product type	Primary Antibody
Code	BT-AP11133
Host	Rabbit
Isotype	IgG
Size	20ul, 50ul, 100ul
Immunogen	Synthetic Peptide of Mas1
Mol wt	N/A
Species reactivity	Human, Mouse, Rat
Clonality	Polyclonal
Recommended application	WB, IHC-p, IF
Concentration	N/A
Full name	Proto-oncogene Mas
Synonyms	Proto-oncogene Mas; MAS1; MAS; Proto-oncogene Mas

This product is for research use only, not for use in human, therapeutic or diagnostic procedure.

Background

This gene encodes a class I seven-transmembrane G-protein-coupled receptor. The encoded protein is a receptor for angiotensin-(1-7) and preferentially couples to the Gq protein, activating the phospholipase C signaling pathway. The encoded protein may play a role in multiple processes including hypotension, smooth muscle relaxation and cardioprotection by mediating the effects of angiotensin-(1-7).

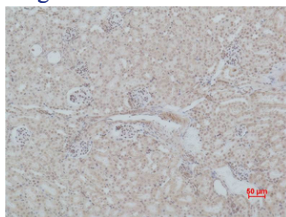
Recommended Dilution

WB: 1: 2000 - 5000

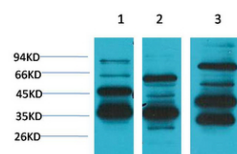
IHC: 1: 200 - 500

Not yet tested in other applications.

Images



Immunohistochemical analysis of paraffin-embedded Mouse Kidney Tissue using Mas1 Polyclonal Antibody.



Western blot analysis of 1) Human Brain Tissue, 2) Mouse Brain Tissue, 3) Rat Brain Tissue using Mas1 Polyclonal Antibody. Secondary antibody was diluted at 1:20000

Storage

-20°C for 1 year