

LRRC2 Rabbit Polyclonal Antibody

Description

Product type	Primary Antibody
Code	BT-AP11142
Host	Rabbit
Isotype	IgG
Size	100ul, 50ul, 20ul
Immunogen	Synthesized peptide derived from human LRRC2
Mol wt	40810
Species reactivity	Human, Mouse
Clonality	Polyclonal
Recommended application	WB
Concentration	1 mg/ml
Full name	LRRC2
Synonyms	LRRC2

This product is for research use only, not for use in human, therapeutic or diagnostic procedure.

Background

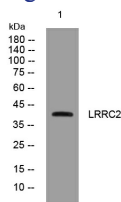
This gene encodes a member of the leucine-rich repeat-containing family of proteins| which function in diverse biological pathways. This family member may possibly be a nuclear protein. Similarity to the RAS suppressor protein| as well as expression down-regulation observed in tumor cells| suggests that it may function as a tumor suppressor. The gene is located in the chromosome 3 common eliminated region 1 (C3CER1)| a 1.4 Mb region that is commonly deleted in diverse tumors. A related pseudogene has been identified on chromosome 2.

Recommended Dilution

WB: 1: 500 - 1: 2000

Not yet tested in other applications.

Images



Western blot analysis of lysates from AD293 cells, primary antibody was diluted at 1:1000, 4°C overnight

Storage

-20°C for 1 year