

LRRN2 Rabbit Polyclonal Antibody

Description

Product type	Primary Antibody
Code	BT-AP11149
Host	Rabbit
Isotype	IgG
Size	100ul, 50ul, 20ul
Immunogen	Synthesized peptide derived from human LRRN2
Mol wt	78430
Species reactivity	Human, Rat, Mouse
Clonality	Polyclonal
Recommended application	WB
Concentration	1 mg/ml
Full name	LRRN2
Synonyms	LRRN2

This product is for research use only, not for use in human, therapeutic or diagnostic procedure.

Background

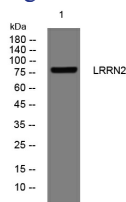
The protein encoded by this gene belongs to the leucine-rich repeat superfamily. This gene was found to be amplified and overexpressed in malignant gliomas. The encoded protein has homology with other proteins that function as cell-adhesion molecules or as signal transduction receptors and is a candidate for the target gene in the 1q32.1 amplicon in malignant gliomas. Two alternatively spliced transcript variants encoding the same protein have been described for this gene.

Recommended Dilution

WB: 1: 500 - 1: 2000

Not yet tested in other applications.

Images



Western blot analysis of lysates from A431 cells, primary antibody was diluted at 1:1000, 4°C overnight

Storage

-20°C for 1 year