

## MBIP1 Polyclonal Antibody

### Description

Product type	Primary Antibody
Code	BT-AP11158
Host	Rabbit
Isotype	IgG
Size	20ul, 50ul, 100ul
Immunogen	Synthesized peptide derived from human protein . at AA range: 1-80
Mol wt	N/A
Species reactivity	Human, Rat, Mouse
Clonality	Polyclonal
Recommended application	WB, ELISA
Concentration	1 mg/ml
Full name	MAP3K12-binding inhibitory protein 1
Synonyms	MAP3K12-binding inhibitory protein 1 ;MAPK upstream kinase-binding inhibitory protein;MUK-binding inhibitory protein

This product is for research use only, not for use in human, therapeutic or diagnostic procedure.

### Background

Inhibits the MAP3K12 activity to induce the activation of the JNK/SAPK pathway.,subcellular location:Shows a cytoplasmic localization when co-expressed with MAP3K12.,tissue specificity:Ubiquitous. High expression seen in the heart and lung.,

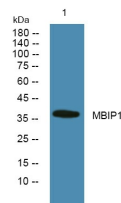
### Recommended Dilution

WB: 1: 500 - 1: 2000

ELISA: 1: 5000 - 1: 20000

Not yet tested in other applications.

### Images



Western blot analysis of lysates from SH-SY5Y cells, primary antibody was diluted at 1:1000, 4°C overnight

### Storage

-20°C for 1 year