

MCHR1 Polyclonal Antibody

Description

Product type	Primary Antibody
Code	BT-AP11173
Host	Rabbit
Isotype	IgG
Size	20ul, 50ul, 100ul
Immunogen	Synthesized peptide derived from part region of human protein
Mol wt	N/A
Species reactivity	Human, Mouse, Rat
Clonality	Polyclonal
Recommended application	WB, ELISA
Concentration	1 mg/ml
Full name	Melanin-concentrating hormone receptor 1
Synonyms	Melanin-concentrating hormone receptor 1 ;MCH receptor 1;MCH-R1;MCHR-1;G-protein coupled receptor 24;MCH-1R;MCH1R;MCHR;SLC-1;Somatostatin receptor-like protein

This product is for research use only, not for use in human, therapeutic or diagnostic procedure.

Background

The protein encoded by this gene, a member of the G protein-coupled receptor family 1, is an integral plasma membrane protein which binds melanin-concentrating hormone. The encoded protein can inhibit cAMP accumulation and stimulate intracellular calcium flux, and is probably involved in the neuronal regulation of food consumption. Although structurally similar to somatostatin receptors, this protein does not seem to bind somatostatin.

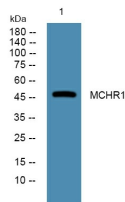
Recommended Dilution

WB: 1: 500 - 1: 2000

ELISA: 1: 5000 - 1: 20000

Not yet tested in other applications.

Images



Western blot analysis of lysates from K562 cells, primary antibody was diluted at 1:1000, 4°C overnight

Storage

-20°C for 1 year