

MDM2(Phospho Ser186/S188) Polyclonal Antibody

Description

Product type	Primary Antibody
Code	BT-AP11200
Host	Rabbit
Isotype	IgG
Size	20ul, 50ul, 100ul
Immunogen	The antiserum was produced against synthesized peptide derived from human MDM2 around the phosphorylation site of Ser186 and Ser188. AA range:151-200
Mol wt	55233
Species reactivity	Human, Rat, Mouse
Clonality	Polyclonal
Recommended application	IF, ICC, WB, ELISA
Concentration	1 mg/ml
Full name	E3 ubiquitin-protein ligase Mdm2
Synonyms	E3 ubiquitin-protein ligase Mdm2; MDM2; E3 ubiquitin-protein ligase Mdm2; Double minute 2 protein; Hdm2; Oncoprotein Mdm2; p53-binding protein Mdm2

This product is for research use only, not for use in human, therapeutic or diagnostic procedure.

Background

This gene encodes a nuclear-localized E3 ubiquitin ligase. The encoded protein can promote tumor formation by targeting tumor suppressor proteins, such as p53, for proteasomal degradation. This gene is itself transcriptionally-regulated by p53. Overexpression or amplification of this locus is detected in a variety of different cancers. There is a pseudogene for this gene on chromosome 2. Alternative splicing results in a multitude of transcript variants, many of which may be expressed only in tumor cells.

Recommended Dilution

WB: 1: 500 - 1: 2000

IF: 1: 200 - 1: 1000

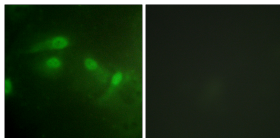
ICC: 1: 200 - 1: 1000

ELISA: 1: 20000

ELISA: 1: 20000

Not yet tested in other applications.

Images



Immunofluorescence analysis of HeLa cells, using MDM2 (Phospho-Ser186+Ser188) Antibody. The picture on the right is blocked with the phospho peptide.

Storage

-20°C for 1 year