

MeCP2 Polyclonal Antibody

Description

Product type	Primary Antibody
Code	BT-AP11209
Host	Rabbit
Isotype	IgG
Size	20ul, 50ul, 100ul
Immunogen	Synthetic Peptide of MeCP2
Mol wt	N/A
Species reactivity	Human
Clonality	Polyclonal
Recommended application	WB
Concentration	
Full name	Methyl-CpG-binding protein 2
Synonyms	Methyl-CpG-binding protein 2; Methyl-CpG-binding protein 2; MeCP-2 protein; MeCp2

This product is for research use only, not for use in human, therapeutic or diagnostic procedure.

Background

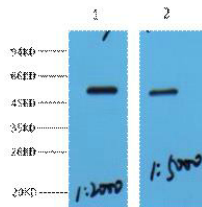
DNA methylation is the major modification of eukaryotic genomes and plays an essential role in mammalian development. Human proteins MECP2, MBD1, MBD2, MBD3, and MBD4 comprise a family of nuclear proteins related by the presence in each of a methyl-CpG binding domain (MBD). Each of these proteins, with the exception of MBD3, is capable of binding specifically to methylated DNA. MECP2, MBD1 and MBD2 can also repress transcription from methylated gene promoters. In contrast to other MBD family members, MECP2 is X-linked and subject to X inactivation. MECP2 is dispensible in stem cells, but is essential for embryonic development. MECP2 gene mutations are the cause of most cases of Rett syndrome, a progressive neurologic developmental disorder and one of the most common causes of mental retardation in females. Alternative splicing results in multiple transcript variants encoding different isoforms.

Recommended Dilution

WB: 1: 2000

Not yet tested in other applications.

Images



Western blot analysis of HeLa, diluted at 1:2000; 1:5000. Secondary antibody was diluted at 1:20000

Storage

-20°C for 1 year