

MED20 Polyclonal Antibody

Description

Product type	Primary Antibody
Code	BT-AP11214
Host	Rabbit
Isotype	IgG
Size	20ul, 50ul, 100ul
Immunogen	Synthesized peptide derived from human protein . at AA range: 60-140
Mol wt	N/A
Species reactivity	Human, Mouse, Rat
Clonality	Polyclonal
Recommended application	WB, ELISA
Concentration	1 mg/ml
Full name	Mediator of RNA polymerase II transcription subunit 20
Synonyms	Mediator of RNA polymerase II transcription subunit 20 ;Mediator complex subunit 20;TRF-proximal protein homolog;hTRFP

This product is for research use only, not for use in human, therapeutic or diagnostic procedure.

Background

This gene encodes a component of the mediator complex (also known as TRAP, SMCC, DRIP, or ARC), a transcriptional coactivator complex thought to be required for the expression of almost all genes. The mediator complex is recruited by transcriptional activators or nuclear receptors to induce gene expression, by interacting with RNA polymerase II and promoting the formation of a transcriptional pre-initiation complex. A mutation in this gene has been associated with a novel infantile-onset neurodegenerative movement disorder. Alternatively spliced transcript variants have been identified.

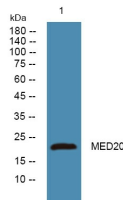
Recommended Dilution

WB: 1: 500 - 1: 2000

ELISA: 1: 5000 - 1: 20000

Not yet tested in other applications.

Images



Western blot analysis of lysates from Jarkat cells, primary antibody was diluted at 1:1000, 4°C overnight

Storage

-20°C for 1 year