

MEF-2C(Phospho Ser387) Polyclonal Antibody

Description

Product type	Primary Antibody
Code	BT-AP11229
Host	Rabbit
Isotype	IgG
Size	20ul, 50ul, 100ul
Immunogen	The antiserum was produced against synthesized peptide derived from human MEF2C around the phosphorylation site of Ser387. AA range:353-402
Mol wt	51221
Species reactivity	Human, Mouse
Clonality	Polyclonal
Recommended application	IHC-p, IF, ELISA
Concentration	1 mg/ml
Full name	Myocyte-specific enhancer factor 2C
Synonyms	Myocyte-specific enhancer factor 2C; MEF2C; Myocyte-specific enhancer factor 2C

This product is for research use only, not for use in human, therapeutic or diagnostic procedure.

Background

This locus encodes a member of the MADS box transcription enhancer factor 2 (MEF2) family of proteins, which play a role in myogenesis. The encoded protein, MEF2 polypeptide C, has both trans-activating and DNA binding activities. This protein may play a role in maintaining the differentiated state of muscle cells. Mutations and deletions at this locus have been associated with severe mental retardation, stereotypic movements, epilepsy, and cerebral malformation. Alternatively spliced transcript variants have been described.

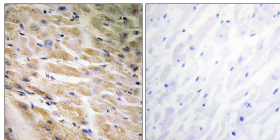
Recommended Dilution

IHC-p: 1: 100 - 1: 300

ELISA: 1: 10000

Not yet tested in other applications.

Images



Immunohistochemistry analysis of paraffin-embedded human heart, using MEF2C (Phospho-Ser387) Antibody. The picture on the right is blocked with the phospho peptide.

Storage

-20°C for 1 year