

MEK-4(Phospho Ser80) Polyclonal Antibody

Description

Product type	Primary Antibody
Code	BT-AP11260
Host	Rabbit
Isotype	IgG
Size	20ul, 50ul, 100ul
Immunogen	The antiserum was produced against synthesized peptide derived from human SEK1/MKK4 around the phosphorylation site of Ser80. AA range:46-95
Mol wt	44288
Species reactivity	Human, Mouse, Rat
Clonality	Polyclonal
Recommended application	WB, IHC-p, IF, ELISA
Concentration	1 mg/ml
Full name	Dual specificity mitogen-activated protein kinase kinase 4
Synonyms	Dual specificity mitogen-activated protein kinase kinase 4; MAP2K4; JNKK1; MEK4; MKK4; PRKMK4; SEK1; SERK1; SKK1; Dual specificity mitogen-activated protein kinase kinase 4; MAP kinase kinase 4; MAPKK 4; JNK-activating kinase 1; MAPK/ERK kinase 4; MEK 4; SAPK/ERK kinase 1; SEK1; Stress-activated pro

This product is for research use only, not for use in human, therapeutic or diagnostic procedure.

Background

This gene encodes a member of the mitogen-activated protein kinase (MAPK) family. Members of this family act as an integration point for multiple biochemical signals and are involved in a wide variety of cellular processes such as proliferation, differentiation, transcription regulation, and development. They form a three-tiered signaling module composed of MAPKKKs, MAPKKs, and MAPKs. This protein is phosphorylated at serine and threonine residues by MAPKKKs and subsequently phosphorylates downstream MAPK targets at threonine and tyrosine residues. A similar protein in mouse has been reported to play a role in liver organogenesis. A pseudogene of this gene is located on the long arm of chromosome X. Alternative splicing results in multiple transcript variants.

Recommended Dilution

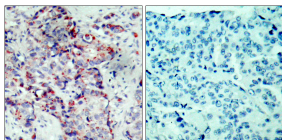
WB: 1: 500 - 1: 2000

IHC-p: 1: 100 - 1: 300

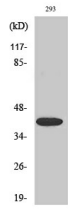
ELISA: 1: 5000

Not yet tested in other applications.

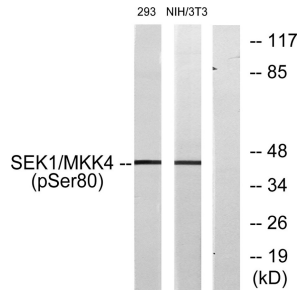
Images



Immunohistochemistry analysis of paraffin-embedded human breast carcinoma, using SEK1/MKK4 (Phospho-Ser80) Antibody. The picture on the right is blocked with the phospho peptide.



Western Blot analysis of various cells using Phospho-MEK-4 (S80) Polyclonal Antibody diluted at 1:1000



Western blot analysis of lysates from 293 cells and NIH/3T3 cells, using SEK1/MKK4 (Phospho-Ser80) Antibody. The lane on the right is blocked with the phospho peptide.

Storage

-20°C for 1 year

501 Changsheng S Rd, Nanhu Dist, Jiaxing, Zhejiang, China

Tel: 86 21 31007137 | E-mail: save@bt-laboratory.com | www.bt-laboratory.com