

## MCLN2 Rabbit Polyclonal Antibody

### Description

<b>Product type</b>	Primary Antibody
<b>Code</b>	BT-AP11267
<b>Host</b>	Rabbit
<b>Isotype</b>	IgG
<b>Size</b>	100ul, 50ul, 20ul
<b>Immunogen</b>	Synthesized peptide derived from human MCLN2
<b>Mol wt</b>	N/A
<b>Species reactivity</b>	Human, Mouse
<b>Clonality</b>	Polyclonal
<b>Recommended application</b>	WB
<b>Concentration</b>	1 mg/ml
<b>Full name</b>	MCLN2
<b>Synonyms</b>	MCLN2; Mucolipin-2

This product is for research use only, not for use in human, therapeutic or diagnostic procedure.

### Background

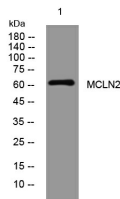
Mucolipins constitute a family of cation channel proteins with homology to the transient receptor potential superfamily. In mammals| the mucolipin family includes 3 members| MCOLN1 (MIM 605248)| MCOLN2| and MCOLN3 (MIM 607400)| that exhibit a common 6-membrane-spanning topology. Homologs of mammalian mucolipins exist in Drosophila and C. elegans. Mutations in the human MCOLN1 gene cause mucopolipidosis IV (MIM 262650) (Karacsonyi et al.| 2007

### Recommended Dilution

WB: 1: 500 - 1: 2000

Not yet tested in other applications.

### Images



Western blot analysis of lysates from HpeG2 cells, primary antibody was diluted at 1:1000, 4°C overnight

### Storage

-20°C for 1 year