

MER/TYRO3(Phospho-Tyr753/Tyr685) Polyclonal Antibody

Description

Product type	Primary Antibody
Code	BT-AP11286
Host	Rabbit
Isotype	IgG
Size	20ul, 50ul, 100ul
Immunogen	Synthesized phospho-peptide around the phosphorylation site of human MER/TYRO3 (Phospho-Tyr753/Tyr685)
Mol wt	110249;96905
Species reactivity	Human, Mouse, Rat
Clonality	Polyclonal
Recommended application	WB, ELISA
Concentration	1 mg/ml
Full name	c-mer proto-oncogene tyrosine kinase
Synonyms	c-mer proto-oncogene tyrosine kinase; MERTK MER

This product is for research use only, not for use in human, therapeutic or diagnostic procedure.

Background

This gene is a member of the MER/AXL/TYRO3 receptor kinase family and encodes a transmembrane protein with two fibronectin type-III domains, two Ig-like C2-type (immunoglobulin-like) domains, and one tyrosine kinase domain. Mutations in this gene have been associated with disruption of the retinal pigment epithelium (RPE) phagocytosis pathway and onset of autosomal recessive retinitis pigmentosa (RP).

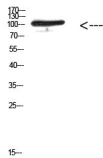
Recommended Dilution

WB: 1: 500 - 10000

ELISA: 1: 10000

Not yet tested in other applications.

Images



Western Blot analysis of 293T cells using Antibody diluted at 500. Secondary antibody was diluted at 1:20000

Storage

-20°C for 1 year