

## Met Rabbit Polyclonal Antibody

### Description

|                         |                                   |
|-------------------------|-----------------------------------|
| Product type            | Primary Antibody                  |
| Code                    | BT-AP11300                        |
| Host                    | Rabbit                            |
| Isotype                 | IgG                               |
| Size                    | 20ul, 50ul, 100ul                 |
| Immunogen               | Recombinant Protein of Met of MET |
| Mol wt                  | N/A                               |
| Species reactivity      | Human, Rat, Mouse                 |
| Clonality               | Polyclonal                        |
| Recommended application | IHC-p, IF                         |
| Concentration           | 1 mg/ml                           |
| Full name               | MET                               |
| Synonyms                | MET; MET                          |

This product is for research use only, not for use in human, therapeutic or diagnostic procedure.

### Background

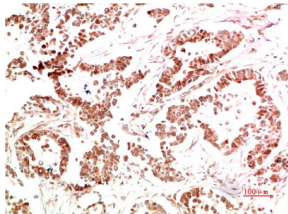
This gene encodes a member of the receptor tyrosine kinase family of proteins and the product of the proto-oncogene MET. The encoded preproprotein is proteolytically processed to generate alpha and beta subunits that are linked via disulfide bonds to form the mature receptor. Further processing of the beta subunit results in the formation of the M10 peptide, which has been shown to reduce lung fibrosis. Binding of its ligand, hepatocyte growth factor, induces dimerization and activation of the receptor, which plays a role in cellular survival, embryogenesis, and cellular migration and invasion. Mutations in this gene are associated with papillary renal cell carcinoma, hepatocellular carcinoma, and various head and neck cancers. Amplification and overexpression of this gene are also associated with multiple human cancers.

### Recommended Dilution

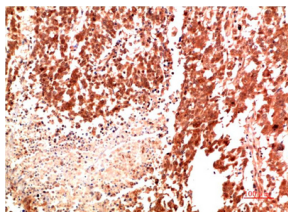
IHC: 1: 100 - 1: 200

Not yet tested in other applications.

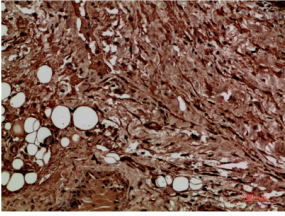
### Images



Immunohistochemical analysis of paraffin-embedded Human Lung Carcinoma Tissue using Met Rabbit pAb diluted at 1:500.



Immunohistochemical analysis of paraffin-embedded Human Stomach Carcinoma Tissue using Met Rabbit pAb diluted at 1:500.



Immunohistochemical analysis of paraffin-embedded Human Liver Carcinoma Tissue using Met Rabbit pAb diluted at 1:500.

#### Storage

-20°C for 1 year

501 Changsheng S Rd, Nanhu Dist, Jiaxing, Zhejiang, China

Tel: 86 21 31007137 | E-mail: [save@bt-laboratory.com](mailto:save@bt-laboratory.com) | [www.bt-laboratory.com](http://www.bt-laboratory.com)