

## MIA2 Polyclonal Antibody

### Description

<b>Product type</b>	Primary Antibody
<b>Code</b>	BT-AP11324
<b>Host</b>	Rabbit
<b>Isotype</b>	IgG
<b>Size</b>	20ul, 50ul, 100ul
<b>Immunogen</b>	Synthesized peptide derived from MIA2 at AA range: 361-410
<b>Mol wt</b>	61771
<b>Species reactivity</b>	Human, Rat, Mouse
<b>Clonality</b>	Polyclonal
<b>Recommended application</b>	WB, ELISA
<b>Concentration</b>	1 mg/ml
<b>Full name</b>	MIA2
<b>Synonyms</b>	MIA2; Melanoma inhibitory activity protein 2

**This product is for research use only, not for use in human, therapeutic or diagnostic procedure.**

### Background

This gene encodes s receptor in the endoplasmic reticulum, which plays a role in the export of large pre-chylomicrons and pre-very low density lipoproteins (pre-VLDLs). Three major classes of transcripts are generated from this gene- melanoma inhibitory activity 2-specific transcripts, cTAGE family member 5-specific transcripts and transcripts that include exons from both these transcript species (TANGO1-like or TALI). Additionally, alternative splicing in these transcripts results in multiple transcript variants encoding multiple isoforms.

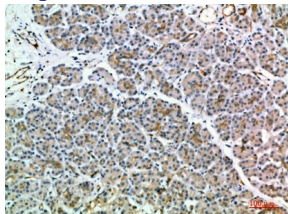
### Recommended Dilution

WB: 1: 500 - 1: 2000

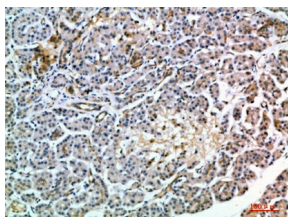
ELISA: 1: 10000 - 1: 20000

Not yet tested in other applications.

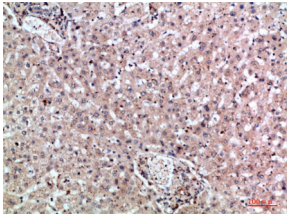
### Images



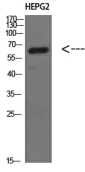
Immunohistochemical analysis of paraffin-embedded human-liver, antibody was diluted at 1:200



Immunohistochemical analysis of paraffin-embedded human-pancreas, antibody was diluted at 1:200



Immunohistochemical analysis of paraffin-embedded human-pancreas, antibody was diluted at 1:200



Western Blot analysis of HEPG2 cells using MIA2 Polyclonal Antibody diluted at 1:500. Secondary antibody was diluted at 1:20000

### Storage

-20°C for 1 year

501 Changsheng S Rd, Nanhu Dist, Jiaxing, Zhejiang, China

Tel: 86 21 31007137 | E-mail: [save@bt-laboratory.com](mailto:save@bt-laboratory.com) | [www.bt-laboratory.com](http://www.bt-laboratory.com)