

Microcephalin Polyclonal Antibody

Description

Product type	Primary Antibody
Code	BT-AP11332
Host	Rabbit
Isotype	IgG
Size	20ul, 50ul, 100ul
Immunogen	The antiserum was produced against synthesized peptide derived from human MCPH1. AA range:91-140
Mol wt	N/A
Species reactivity	Human, Mouse
Clonality	Polyclonal
Recommended application	WB, IHC-p, IF, ELISA
Concentration	1 mg/ml
Full name	Microcephalin
Synonyms	Microcephalin; MCPH1; Microcephalin

This product is for research use only, not for use in human, therapeutic or diagnostic procedure.

Background

This gene encodes a DNA damage response protein. The encoded protein may play a role in G2/M checkpoint arrest via maintenance of inhibitory phosphorylation of cyclin-dependent kinase 1. Mutations in this gene have been associated with primary autosomal recessive microcephaly 1 and premature chromosome condensation syndrome. Alternatively spliced transcript variants have been described.

Recommended Dilution

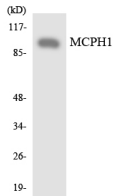
WB: 1: 500 - 1: 2000

IHC-p: 1: 100 - 1: 300

ELISA: 1: 40000

Not yet tested in other applications.

Images



Western blot analysis of the lysates from HT-29 cells using MCPH1 antibody.

Storage

-20°C for 1 year