

## MMAC Rabbit Polyclonal Antibody

### Description

<b>Product type</b>	Primary Antibody
<b>Code</b>	BT-AP11335
<b>Host</b>	Rabbit
<b>Isotype</b>	IgG
<b>Size</b>	100ul, 50ul, 20ul
<b>Immunogen</b>	Synthesized peptide derived from human MMAC
<b>Mol wt</b>	31020
<b>Species reactivity</b>	Human, Mouse
<b>Clonality</b>	Polyclonal
<b>Recommended application</b>	WB
<b>Concentration</b>	1 mg/ml
<b>Full name</b>	MMAC
<b>Synonyms</b>	MMAC

This product is for research use only, not for use in human, therapeutic or diagnostic procedure.

### Background

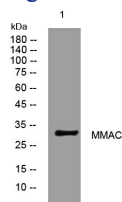
The exact function of the protein encoded by this gene is not known| however| its C-terminal region shows similarity to TonB| a bacterial protein involved in energy transduction for cobalamin (vitamin B12) uptake. Hence| it is postulated that this protein may have a role in the binding and intracellular trafficking of cobalamin. Mutations in this gene are associated with methylmalonic aciduria and homocystinuria type cblC.

### Recommended Dilution

WB: 1: 500 - 1: 2000

Not yet tested in other applications.

### Images



### Storage

-20°C for 1 year