

MIP-5 Polyclonal Antibody

Description

Product type	Primary Antibody
Code	BT-AP11344
Host	Rabbit
Isotype	IgG
Size	20ul, 50ul, 100ul
Immunogen	Synthetic peptide from human protein at AA range: 51-100
Mol wt	N/A
Species reactivity	Human, Rat, Mouse
Clonality	Polyclonal
Recommended application	IHC-p, IF, ELISA
Concentration	1 mg/ml
Full name	C-C motif chemokine 15
Synonyms	C-C motif chemokine 15 ;Chemokine CC-2;HCC-2;Leukotactin-1;LKN-1;MIP-1 delta;Macrophage inflammatory protein 5;MIP-5;Mrp-2b;NCC-3;Small-inducible cytokine A15 [Cleaved into: CCL15;2; C-C motif chemokine 15; Chemokine CC-2; HCC-2; Leukotactin-1; LKN-1; MIP-1 delta; Macrophage inflammatory protein 5; MIP-5; Mrp-2b; NCC-3; Small-inducible cytokine A15; CCL15;22-92; CCL15;25-92; CCL15;29-92;

This product is for research use only, not for use in human, therapeutic or diagnostic procedure.

Background

This gene is located in a cluster of similar genes in the same region of chromosome 17. These genes encode CC cytokines, which are secreted proteins characterized by two adjacent cysteines. The product of this gene is chemotactic for T cells and monocytes, and acts through C-C chemokine receptor type 1 (CCR1). The proprotein is further processed into numerous smaller functional peptides. Naturally-occurring readthrough transcripts occur from this gene into the downstream gene, CCL14 (chemokine (C-C motif) ligand 14).

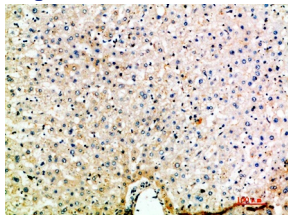
Recommended Dilution

IHC-p: 1: 50 - 1: 200

ELISA: 1: 10000 - 1: 20000

Not yet tested in other applications.

Images



Immunohistochemical analysis of paraffin-embedded human-liver, antibody was diluted at 1:200

Storage

-20°C for 1 year