

## MK12 Polyclonal Antibody

### Description

|                                |  |
|--------------------------------|--|
| <b>Product type</b>            | Primary Antibody   |
| <b>Code</b>                    | BT-AP11352   |
| <b>Host</b>                    | Rabbit   |
| <b>Isotype</b>                 | IgG  |
| <b>Size</b>                    | 20ul, 50ul, 100ul  |
| <b>Immunogen</b>               | Synthesized peptide derived from human protein . at AA range: 70-150   |
| <b>Mol wt</b>                  | N/A  |
| <b>Species reactivity</b>      | Human, Mouse, Rat  |
| <b>Clonality</b>               | Polyclonal   |
| <b>Recommended application</b> | WB, ELISA  |
| <b>Concentration</b>           | 1 mg/ml  |
| <b>Full name</b>               | Mitogen-activated protein kinase 12  |
| <b>Synonyms</b>                | Mitogen-activated protein kinase 12 ;MAP kinase 12;MAPK 12;EC 2.7.11.24;Extracellular signal-regulated kinase 6;ERK-6;Mitogen-activated protein kinase p38 gamma;MAP kinase p38 gamma;Stre |

**This product is for research use only, not for use in human, therapeutic or diagnostic procedure.**

### Background

Activation of members of the mitogen-activated protein kinase family is a major mechanism for transduction of extracellular signals. Stress-activated protein kinases are one subclass of MAP kinases. The protein encoded by this gene functions as a signal transducer during differentiation of myoblasts to myotubes.

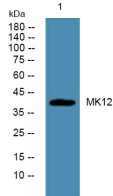
### Recommended Dilution

WB: 1: 500 - 1: 2000

ELISA: 1: 5000 - 1: 20000

Not yet tested in other applications.

### Images



Western blot analysis of lysates from DU145 cells, primary antibody was diluted at 1:1000, 4°C overnight

### Storage

-20°C for 1 year