

MKP-1/2(Phospho Ser296/318) Polyclonal Antibody

Description

Product type	Primary Antibody
Code	BT-AP11358
Host	Rabbit
Isotype	IgG
Size	20ul, 50ul, 100ul
Immunogen	The antiserum was produced against synthesized peptide derived from human MKP-1/2 around the phosphorylation site of Ser296/318. AA range:261-310
Mol wt	39298
Species reactivity	Human, Mouse, Rat
Clonality	Polyclonal
Recommended application	WB, IHC-p, IF, ELISA
Concentration	1 mg/ml
Full name	Dual specificity protein phosphatase 1/4
Synonyms	Dual specificity protein phosphatase 1/4; DUSP1; CL100; MKP1; PTPN10; VH1; Dual specificity protein phosphatase 1; Dual specificity protein phosphatase hVH1; Mitogen-activated protein kinase phosphatase 1; MAP kinase phosphatase 1; MKP-1; Protein-tyrosine phosphatase CL100; DUSP4;

This product is for research use only, not for use in human, therapeutic or diagnostic procedure.

Background

The expression of DUSP1 gene is induced in human skin fibroblasts by oxidative/heat stress and growth factors. It specifies a protein with structural features similar to members of the non-receptor-type protein-tyrosine phosphatase family, and which has significant amino-acid sequence similarity to a Tyr/Ser-protein phosphatase encoded by the late gene H1 of vaccinia virus. The bacterially expressed and purified DUSP1 protein has intrinsic phosphatase activity, and specifically inactivates mitogen-activated protein (MAP) kinase in vitro by the concomitant dephosphorylation of both its phosphothreonine and phosphotyrosine residues. Furthermore, it suppresses the activation of MAP kinase by oncogenic ras in extracts of *Xenopus* oocytes. Thus, DUSP1 may play an important role in the human cellular response to environmental stress as well as in the negative regulation of cellular proliferation.

Recommended Dilution

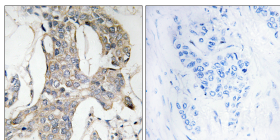
WB: 1: 500 - 1: 2000

IHC-p: 1: 100 - 1: 300

ELISA: 1: 5000

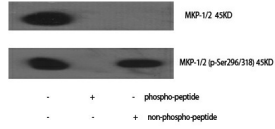
Not yet tested in other applications.

Images

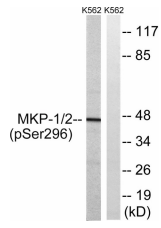


Immunohistochemistry analysis of paraffin-embedded human breast carcinoma, using MKP-1/2 (Phospho-Ser296/318) Antibody. The picture on the right is blocked with the phospho peptide.

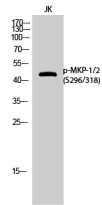
Western Blot analysis of various cells using Phospho-MKP-1/2 (S296/318) Polyclonal Antibody



Western Blot analysis of JK cells using Phospho-MKP-1/2 (S296/318) Polyclonal Antibody



Western blot analysis of lysates from K562 cells treated with heat shock , using MKP-1/2 (Phospho-Ser296/318) Antibody. The lane on the right is blocked with the phospho peptide.



Storage

-20°C for 1 year

501 Changsheng S Rd, Nanhu Dist, Jiaxing, Zhejiang, China

Tel: 86 21 31007137 | E-mail: save@bt-laboratory.com | www.bt-laboratory.com