

MS4A7 Rabbit Polyclonal Antibody

Description

Product type	Primary Antibody
Code	BT-AP11375
Host	Rabbit
Isotype	IgG
Size	100ul, 50ul, 20ul
Immunogen	Synthesized peptide derived from human MS4A7
Mol wt	26400
Species reactivity	Human, Rat, Mouse
Clonality	Polyclonal
Recommended application	WB
Concentration	1 mg/ml
Full name	MS4A7
Synonyms	MS4A7

This product is for research use only, not for use in human, therapeutic or diagnostic procedure.

Background

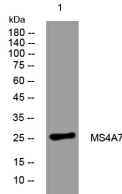
This gene encodes a member of the membrane-spanning 4A gene family| members of which are characterized by common structural features and similar intron/exon splice boundaries and display unique expression patterns in hematopoietic cells and nonlymphoid tissues. This family member is associated with mature cellular function in the monocytic lineage| and it may be a component of a receptor complex involved in signal transduction. This gene is localized to 11q12| in a cluster of other family members. At least four alternatively spliced transcript variants encoding two distinct isoforms have been observed.

Recommended Dilution

WB: 1: 500 - 1: 2000

Not yet tested in other applications.

Images



Western blot analysis of lysates from HeLa cells, primary antibody was diluted at 1:1000, 4°C overnight

Storage

-20°C for 1 year