

## MTMR5 Rabbit Polyclonal Antibody

### Description

|                                |  |
|--------------------------------|--|
| <b>Product type</b>            | Primary Antibody                             |
| <b>Code</b>                    | BT-AP11408                                   |
| <b>Host</b>                    | Rabbit                                       |
| <b>Isotype</b>                 | IgG  |
| <b>Size</b>                    | 100ul, 50ul, 20ul                            |
| <b>Immunogen</b>               | Synthesized peptide derived from human MTMR5 |
| <b>Mol wt</b>                  | 205370                                       |
| <b>Species reactivity</b>      | Human, Mouse                                 |
| <b>Clonality</b>               | Polyclonal                                   |
| <b>Recommended application</b> | WB   |
| <b>Concentration</b>           | 1 mg/ml                                      |
| <b>Full name</b>               | MTMR5  |
| <b>Synonyms</b>                | MTMR5  |

This product is for research use only, not for use in human, therapeutic or diagnostic procedure.

### Background

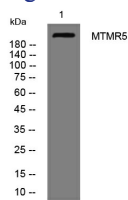
This gene encodes a member of the protein-tyrosine phosphatase family. However, the encoded protein does not appear to be a catalytically active phosphatase because it lacks several amino acids in the catalytic pocket. This protein contains a Guanine nucleotide exchange factor (GEF) domain which is necessary for its role in growth and differentiation. Mutations in this gene have been associated with Charcot-Marie-Tooth disease 4B3. Pseudogenes of this gene have been defined on chromosomes 1 and 8.

### Recommended Dilution

WB: 1: 500 - 1: 2000

Not yet tested in other applications.

### Images



Western blot analysis of lysates from A549 cells, primary antibody was diluted at 1:1000, 4°C overnight

### Storage

-20°C for 1 year