

## MTMRC Rabbit Polyclonal Antibody

### Description

Product type	Primary Antibody
Code	BT-AP11412
Host	Rabbit
Isotype	IgG
Size	100ul, 50ul, 20ul
Immunogen	Synthesized peptide derived from human MTMRC
Mol wt	82170
Species reactivity	Human, Mouse, Rat
Clonality	Polyclonal
Recommended application	WB
Concentration	1 mg/ml
Full name	MTMRC
Synonyms	MTMRC

This product is for research use only, not for use in human, therapeutic or diagnostic procedure.

### Background

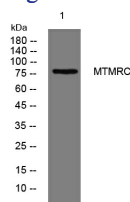
Phosphatidylinositide 3-kinase-derived membrane-anchored phosphatidylinositides| such as phosphatidylinositol 3-phosphate (PtdIns(3)P)| regulate diverse cellular processes. The protein encoded by this gene functions as an adaptor subunit in a complex with an active PtdIns(3)P 3-phosphatase. Alternatively spliced transcript variants encoding different isoforms have been found for this gene.

### Recommended Dilution

WB: 1: 500 - 1: 2000

Not yet tested in other applications.

### Images



Western blot analysis of lysates from HpeG2 cells, primary antibody was diluted at 1:1000, 4°C overnight

### Storage

-20°C for 1 year

501 Changsheng S Rd, Nanhu Dist, Jiaxing, Zhejiang, China

Tel: 86 21 31007137 | E-mail: [save@bt-laboratory.com](mailto:save@bt-laboratory.com) | [www.bt-laboratory.com](http://www.bt-laboratory.com)