

## Mob1A Polyclonal Antibody

### Description

<b>Product type</b>	Primary Antibody
<b>Code</b>	BT-AP11421
<b>Host</b>	Rabbit
<b>Isotype</b>	IgG
<b>Size</b>	20ul, 50ul, 100ul
<b>Immunogen</b>	The antiserum was produced against synthesized peptide derived from human MOL1A. AA range:101-150
<b>Mol wt</b>	25091
<b>Species reactivity</b>	Human, Mouse, Monkey
<b>Clonality</b>	Polyclonal
<b>Recommended application</b>	WB, IHC-p, IF, ELISA
<b>Concentration</b>	1 mg/ml
<b>Full name</b>	MOB kinase activator 1B
<b>Synonyms</b>	MOB kinase activator 1B; MOB1B; MOB4A; MOBKL1A; MOB kinase activator 1B; Mob1 homolog 1A; Mob1A; Mob1B; Mps one binder kinase activator-like 1A

**This product is for research use only, not for use in human, therapeutic or diagnostic procedure.**

### Background

The protein encoded by this gene is similar to the yeast Mob1 protein. Yeast Mob1 binds Mps1p, a protein kinase essential for spindle pole body duplication and mitotic checkpoint regulation. Three transcript variants encoding different isoforms have been found for this gene.

### Recommended Dilution

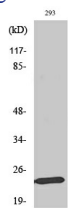
WB: 1: 500 - 1: 2000

IHC-p: 1: 100 - 1: 300

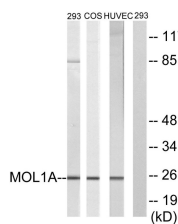
ELISA: 1: 40000

Not yet tested in other applications.

### Images



Western Blot analysis of various cells using Mob1A Polyclonal Antibody



Western blot analysis of lysates from 293, COS7, and HUVEC cells, treated with IFN 2500U/ml 30', using MOL1A Antibody. The lane on the right is blocked with the synthesized peptide.

## Storage

-20°C for 1 year

501 Changsheng S Rd, Nanhu Dist, Jiaxing, Zhejiang, China

Tel: 86 21 31007137 | E-mail: [save@bt-laboratory.com](mailto:save@bt-laboratory.com) | [www.bt-laboratory.com](http://www.bt-laboratory.com)