

MUC22 Rabbit Polyclonal Antibody

Description

| | |
|--------------------------------|--|
| Product type | Primary Antibody |
| Code | BT-AP11423 |
| Host | Rabbit |
| Isotype | IgG |
| Size | 100ul, 50ul, 20ul |
| Immunogen | Synthesized peptide derived from human MUC22 |
| Mol wt | 195030 |
| Species reactivity | Human, Rat, Mouse |
| Clonality | Polyclonal |
| Recommended application | WB |
| Concentration | 1 mg/ml |
| Full name | MUC22 |
| Synonyms | MUC22 |

This product is for research use only, not for use in human, therapeutic or diagnostic procedure.

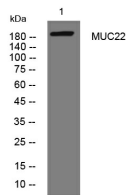
Background

Recommended Dilution

WB: 1: 500 - 1: 2000

Not yet tested in other applications.

Images



Western blot analysis of lysates from U2OS cells, primary antibody was diluted at 1:1000, 4°C overnight

Storage

-20°C for 1 year

501 Changsheng S Rd, Nanhu Dist, Jiaxing, Zhejiang, China

Tel: 86 21 31007137 | E-mail: save@bt-laboratory.com | www.bt-laboratory.com