

## MYH7B Rabbit Polyclonal Antibody

### Description

Product type	Primary Antibody
Code	BT-AP11453
Host	Rabbit
Isotype	IgG
Size	100ul, 50ul, 20ul
Immunogen	Synthesized peptide derived from human MYH7B
Mol wt	213510
Species reactivity	Human, Mouse
Clonality	Polyclonal
Recommended application	WB
Concentration	1 mg/ml
Full name	MYH7B
Synonyms	MYH7B

This product is for research use only, not for use in human, therapeutic or diagnostic procedure.

### Background

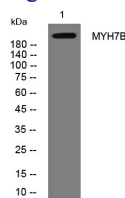
The myosin II molecule is a multi-subunit complex consisting of two heavy chains and four light chains. This gene encodes a heavy chain of myosin II which is a member of the motor-domain superfamily. The heavy chain includes a globular motor domain which catalyzes ATP hydrolysis and interacts with actin and a tail domain in which heptad repeat sequences promote dimerization by interacting to form a rod-like alpha-helical coiled coil. This heavy chain subunit is a slow-twitch myosin. Alternatively spliced transcript variants have been found but the full-length nature of these variants is not determined.

### Recommended Dilution

WB: 1: 500 - 1: 2000

Not yet tested in other applications.

### Images



Western blot analysis of lysates from HuvEc cells, primary antibody was diluted at 1:1000, 4°C overnight

### Storage

-20°C for 1 year