

MYL5 Rabbit Polyclonal Antibody

Description

Product type	Primary Antibody
Code	BT-AP11455
Host	Rabbit
Isotype	IgG
Size	100ul, 50ul, 20ul
Immunogen	Synthesized peptide derived from human MYL5
Mol wt	19030
Species reactivity	Human, Rat, Mouse
Clonality	Polyclonal
Recommended application	WB
Concentration	1 mg/ml
Full name	MYL5
Synonyms	MYL5

This product is for research use only, not for use in human, therapeutic or diagnostic procedure.

Background

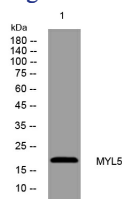
This gene encodes one of the myosin light chains| a component of the hexameric ATPase cellular motor protein myosin. Myosin is composed of two heavy chains| two nonphosphorylatable alkali light chains| and two phosphorylatable regulatory light chains. This gene product| one of the regulatory light chains| is expressed in fetal muscle and in adult retina| cerebellum| and basal ganglia.

Recommended Dilution

WB: 1: 500 - 1: 2000

Not yet tested in other applications.

Images



Western blot analysis of lysates from MCF-7 cells, primary antibody was diluted at 1:1000, 4°C overnight

Storage

-20°C for 1 year

501 Changsheng S Rd, Nanhu Dist, Jiaxing, Zhejiang, China

Tel: 86 21 31007137 | E-mail: save@bt-laboratory.com | www.bt-laboratory.com