

MPRB Polyclonal Antibody

Description

Product type	Primary Antibody
Code	BT-AP11459
Host	Rabbit
Isotype	IgG
Size	20ul, 50ul, 100ul
Immunogen	Synthesized peptide derived from human protein . at AA range: 280-360
Mol wt	N/A
Species reactivity	Human, Mouse
Clonality	Polyclonal
Recommended application	WB, ELISA
Concentration	1 mg/ml
Full name	Membrane progestin receptor beta
Synonyms	Membrane progestin receptor beta ;mPR beta;Lysosomal membrane protein in brain 1;Progesterin and adipoQ receptor family member 8;Progesterin and adipoQ receptor family member VIII

This product is for research use only, not for use in human, therapeutic or diagnostic procedure.

Background

Steroid membrane receptor. Binds progesterone. May be involved in oocyte maturation.,Belongs to the ADIPOR family.,subcellular location:Colocalizes with a lysosomal protein cathepsin D.,tissue specificity:Expressed in brain and spinal cord.,

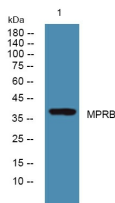
Recommended Dilution

WB: 1: 500 - 1: 2000

ELISA: 1: 5000 - 1: 20000

Not yet tested in other applications.

Images



Western blot analysis of lysates from K562 cells, primary antibody was diluted at 1:1000, 4°C overnight

Storage

-20°C for 1 year