

# Myosin Light Chain 2(Phospho-Thr19/Ser20) Rabbit Polyclonal Antibody

## Description

Product type	Primary Antibody
Code	BT-AP11471
Host	Rabbit
Isotype	IgG
Size	100ul, 50ul, 20ul
Immunogen	Synthesized phosho peptide around human Myosin Light Chain 2 (Thr19 and Ser20)
Mol wt	N/A
Species reactivity	Human, Mouse, Rat
Clonality	Polyclonal
Recommended application	WB
Concentration	1 mg/ml
Full name	Myosin Light Chain 2
Synonyms	Myosin Light Chain 2 ;Thr19/Ser20; Myosin regulatory light polypeptide 9; 20 kDa myosin light chain; LC20; MLC-2C; Myosin RLC; Myosin regulatory light chain 2; smooth muscle isoform; Myosin regulatory light chain 9; Myosin regulatory light chain MRLC1

**This product is for research use only, not for use in human, therapeutic or diagnostic procedure.**

## Background

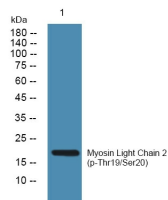
Myosin| a structural component of muscle| consists of two heavy chains and four light chains. The protein encoded by this gene is a myosin light chain that may regulate muscle contraction by modulating the ATPase activity of myosin heads. The encoded protein binds calcium and is activated by myosin light chain kinase. Two transcript variants encoding different isoforms have been found for this gene.

## Recommended Dilution

WB: 1: 1000 - 1: 2000

Not yet tested in other applications.

## Images



Western blot analysis of lysates from SW480 cells, primary antibody was diluted at 1:1000, 4°C overnight

## Storage

-20°C for 1 year