

MRGRD Polyclonal Antibody

Description

Product type	Primary Antibody
Code	BT-AP11474
Host	Rabbit
Isotype	IgG
Size	20ul, 50ul, 100ul
Immunogen	Synthesized peptide derived from part region of human protein
Mol wt	N/A
Species reactivity	Human, Rat, Mouse
Clonality	Polyclonal
Recommended application	WB, ELISA
Concentration	1 mg/ml
Full name	Mas-related G-protein coupled receptor member D
Synonyms	Mas-related G-protein coupled receptor member D ;Beta-alanine receptor;G-protein coupled receptor TGR7

This product is for research use only, not for use in human, therapeutic or diagnostic procedure.

Background

May regulate nociceptor function and/or development, including the sensation or modulation of pain. Functions as a specific membrane receptor for beta-alanine. Beta-alanine at micromolar doses specifically evoked Ca(2+) influx in cells expressing the receptor. Beta-alanine decreases forskolin-stimulated cAMP production in cells expressing the receptor, suggesting that the receptor couples with G-protein G(q) and G(i).,Belongs to the G-protein coupled receptor 1 family. Mas subfamily.,subcellular location:Localized at the plasma membrane but internalized into the cytoplasm after treatment with beta-alanine.,

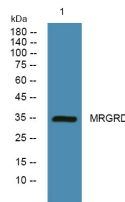
Recommended Dilution

WB: 1: 500 - 1: 2000

ELISA: 1: 5000 - 1: 20000

Not yet tested in other applications.

Images



Western blot analysis of lysates from SW480 cells, primary antibody was diluted at 1:1000, 4°C overnight

Storage

-20°C for 1 year