

MRGX2 Polyclonal Antibody

Description

Product type	Primary Antibody
Code	BT-AP11476
Host	Rabbit
Isotype	IgG
Size	20ul, 50ul, 100ul
Immunogen	Synthesized peptide derived from human protein . at AA range: 250-330
Mol wt	N/A
Species reactivity	Human, Mouse
Clonality	Polyclonal
Recommended application	WB, ELISA
Concentration	1 mg/ml
Full name	Mas-related G-protein coupled receptor member X2
Synonyms	Mas-related G-protein coupled receptor member X2

This product is for research use only, not for use in human, therapeutic or diagnostic procedure.

Background

Orphan receptor. Probably involved in the function of nociceptive neurons. May regulate nociceptor function and/or development, including the sensation or modulation of pain. Cortistatin-14 seems to be a high potency ligand at this receptor. Cortistatin has several biological functions including roles in sleep regulation locomotor activity, and cortical function. In receptor-expressing cells, cortistatin-stimulated increases in intracellular Ca(2+) but had no effect on basal or forskolin-stimulated cAMP levels, suggesting that this receptor is G(q)-coupled. Belongs to the G-protein coupled receptor 1 family. Mas subfamily. Tissue specificity: Has a limited expression profile, both peripheral and within the central nervous system, with highest levels in dorsal root ganglion.

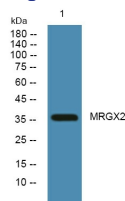
Recommended Dilution

WB: 1: 500 - 1: 2000

ELISA: 1: 5000 - 1: 20000

Not yet tested in other applications.

Images



Western blot analysis of lysates from DU145 cells, primary antibody was diluted at 1:1000, 4°C overnight

Storage

-20°C for 1 year